

Ikena 2.0 Video Enhancement System

New features suggested by UK police users make Ikena even better at enhancing CCTV, mobile phone videos and digital video.

Features

Enhance Mobile Phone Video

Import CCTV from DVRs

Import Youtube Clips

Remove Noise + Artifacts

Image Stabilisation

Flexible Export of Results

Super Resolution up to 9x

Colour Correction

Compare Functions

Retains any Audio

Accepts DVDs Natively

Evidential Reporting Tools

Much more...

Telephone for details or demo

01312 722721

Best Evidence Technology Ltd.

CBC House
24 Canning Street
Edinburgh
EH3 8EG

Tel: 01312 722721

Fax: 01312 722800

Email: info@bestev.co.uk

www.bestev.co.uk

Ikena uses the newest techniques to get the best from digital video, it is simple and quick to use with a high level of automation has meant that users have been able to process more footage than ever before.

Ikena enhances whole video clips, adding information from neighbouring images to create images far clearer than any existing point in the clip. This is a completely new, mathematical reconstruction of the picture which even allows enhancement of moving objects or handheld footage without blurring.



Image 1



Image 2

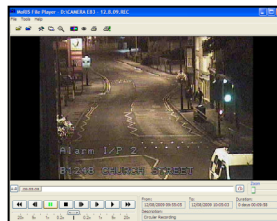


Image 3



Enhanced

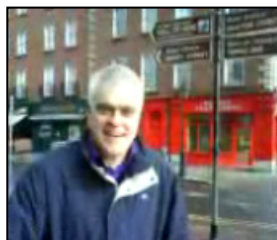
Accurate measurements of the movement between different frames above allow Ikena to combine these three low resolution images into one high resolution image.



CCTV from DVRs

Footage within its own player can be viewed, converted or enhanced using Ikena. If you can play it, Ikena can import it in high resolution !

Save your footage in a variety of formats including AVI, WMV, and MPEG4 (H.264/MP4)

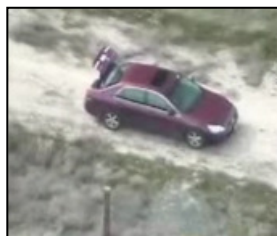


Mobile Phone Videos

Video taken on phones can be heavily compressed. Ikena removes artefacts and sensor noise, bringing out more detail and vastly improving the picture.

Ikena wins challenge on Channel 5's The Gadget Show

Enhancing mobile phone video to find out
'Where in the world is John Bentley ?'



Stabilise Shaky video

Improve footage from aircraft, vehicles and bodyworn cameras.

Ikena is used by the US military to process feeds from unmanned aerial vehicles. With high specification hardware there is a version of Ikena available that can process these pictures live, with no delay to hinder the online 'pilot'.



Automated Masking Option – world first

The demanding task of masking or highlighting someone's identity is now much easier and lightening fast ! Ikena's tracking algorithms will follow your moving object for you. Capable of staying 'locked on' even when the object moves in different directions or is occluded by foreground.

(Available as software upgrade for Ikena 2.0)

What's new in Ikena 2

CCTV from DVR player software

For footage that will only play within it's own player, Ikena now has a high quality screen capture feature that imports your footage directly. No messy conversions, remove duplicate frames setting ensures the best video enhancement and economical filesizes.

High Speed Processing

Ikena now runs on even higher spec machines with full windows 7 support, 64 bit capability and thanks to new Intel optimisations Ikena 2 is twice as fast as Ikena 1 on dual core machines.

H.264 and HD support

Ikena will process full HD and can now save out your processed videos in a wider range of file types including uncompressed AVI and compressed H.264.

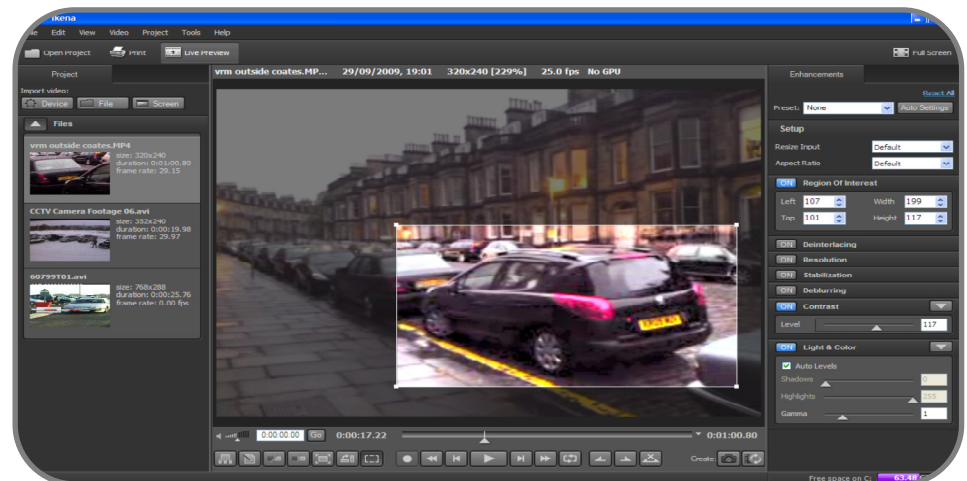
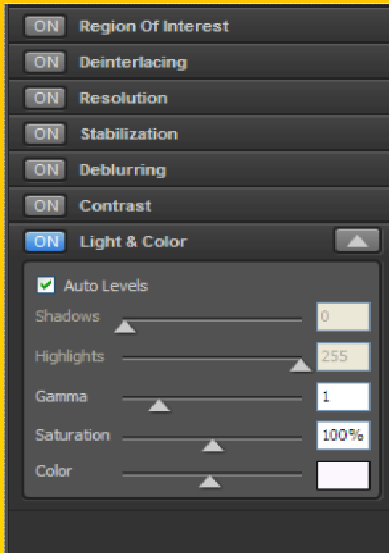
Extra Navigation Bar

Users wishing to search through large clips in tiny steps can now expand the navigation bar for fully configurable control. This is another example of Ikena reacting to the wishes of UK Police users !

World First - Automated Masking and Tracking Option

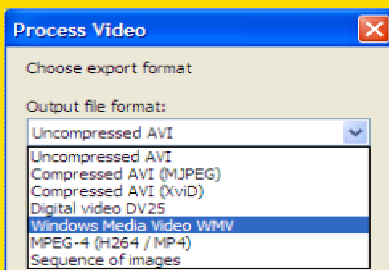
This exciting new option will mask/highlight your subjects even with High Definition (HD) clips.

Simple slider bars control enhancements in tiny, repeatable increments. Automatic and preset configurations get amazing results with just one mouse click.



Screenshot of Ikena 2.0

Exporting enhanced video in different formats is quick and easy, just right click on the video thumbnail to make your choice.



Telephone for details or demo

01312 722721

Best Evidence Technology Ltd.
CBC House
24 Canning Street
Edinburgh
EH3 8EG

Tel: 01312 722721

Fax: 01312 722800

Email: info@bestev.co.uk

www.bestev.co.uk

Tools

- Zoom** Non interpolated live zoom allows for export of a small section of the picture
- Picture** Adjustments for Brightness, Contrast, Black level, White level, Gamma, Colour Hue, Colour saturation.
- Enhance** Use up to 31 neighboring images to gain more detail and suppress noise.
- Sharpen** Deblurring tool with variable strength and focus.
- Resolution** Super resolution factors of up to 9x (3x + 3x).
- Import** Accepts most digital filetypes natively including mobile phone and DVD (VOB), internal conversion of DVR CCTV footage from players, can capture analogue video with optional external device, download Youtube links direct.
- Export** AVI, WMV, MP4, sequence of stills. Merge feature saves original and enhanced clips.
- Edit** Allow trimming of clips by defining in and out points.
- Compare** Special tools allow for live 'before and after' views to check enhancement.
- Snapshot** Save still images out in BMP, TIF, JPEG, PNG files.
- ROI** Save time by only processing a region of interest.
- Stabilise** Image stabiliser with switchable auto zoom for solid picture edges.
- Reporting** Printable document details any settings and proves integrity with MD5 hashing.

Configurations/Options

Software Only

For installation onto suitable windows PC. dTective compliant - install Ikena on your Avid !

Ikena Laptop

Pre installed on high spec HP laptop for 'In the field' use. Ruggedised machines available

Ikena Desktop

Supplied on high spec HP Z400 workstation for faster processing and more storage.

Ikena Software Upgrades

Ikena 'Spotlight' for Masking/Tracking, Ikena GPU for live processing